



## SHELL COVE, 9 Lakelands Close

\$779,000

 3
  2
  2

*“Designed to be enjoyed by modern owners with an active lifestyle, this stunning 3-bedroom home delivers on every level...”*

- Double storey 3 bedroom home in quality suburb
- Entertainer-friendly indoor/outdoor layout
- Internal access remote double garage
- Large master bedroom featuring ensuite
- Landscaped gardens including rainwater tank
- Short walk to Killalea State Park or Shell Cove Links



Situated in the quality-lined streets of Shell Cove, just a few hundred metres from the natural beauty of Killalea State Park and its stunning beaches, 9 Lakelands Close is for anyone who wants modern living without the continual maintenance. Just three years young and finished in stunning dark face brick and cladding, it's an attractive welcome home. Beyond the internal access double garage, the tiled ground floor offers up an air conditioned large front lounge with extra height ceiling, before flowing past powder room and laundry to reveal the light-filled open plan kitchen/dining space. This is without question the hub of the home, its designer kitchen loaded with stone benches, 900mm stove, soft-close drawers, glass splashback and island bench.

*Council Rates: \$490.48pq*

*Water Rates: \$171.96pq*

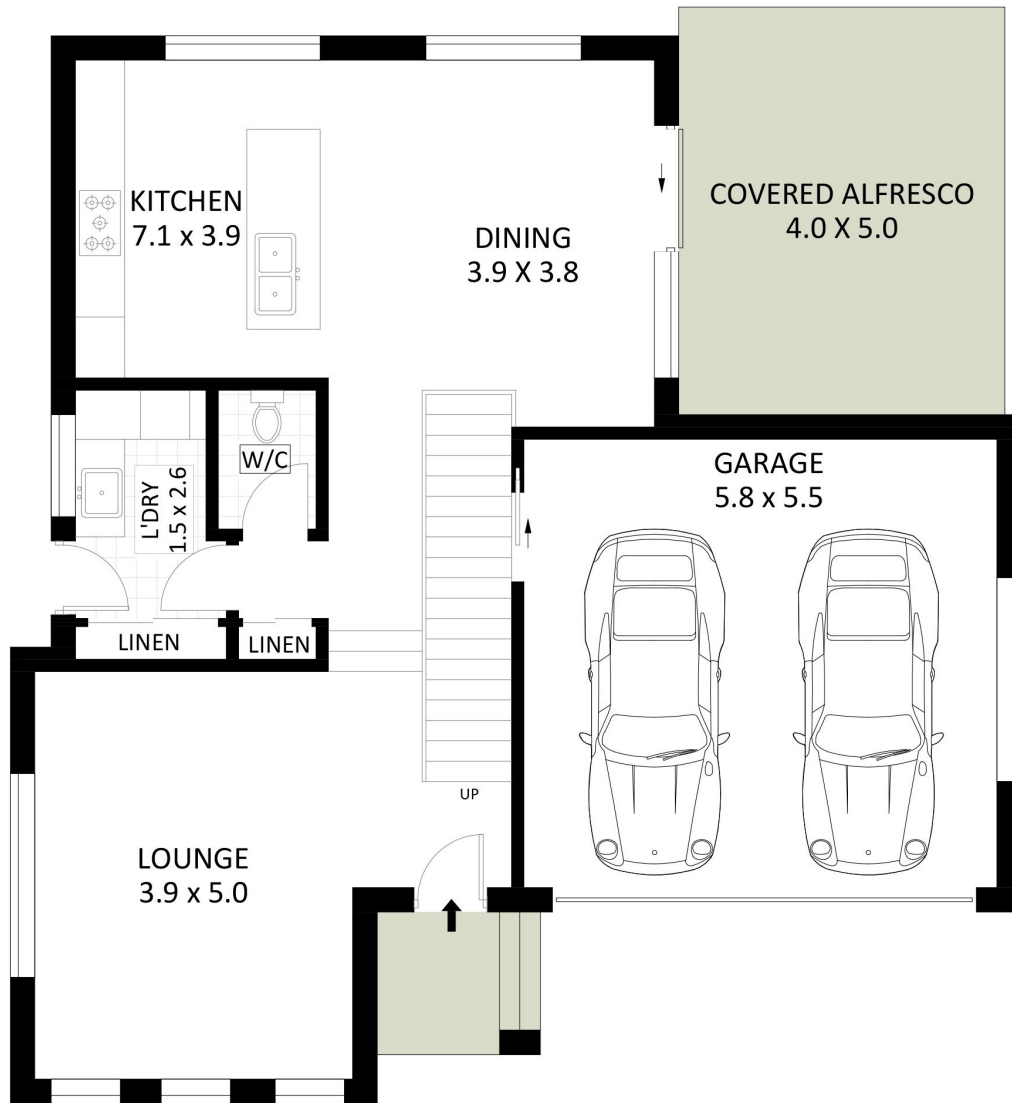
*Land Size: 250m<sup>2</sup>*

**The Robert Dimovski Team**

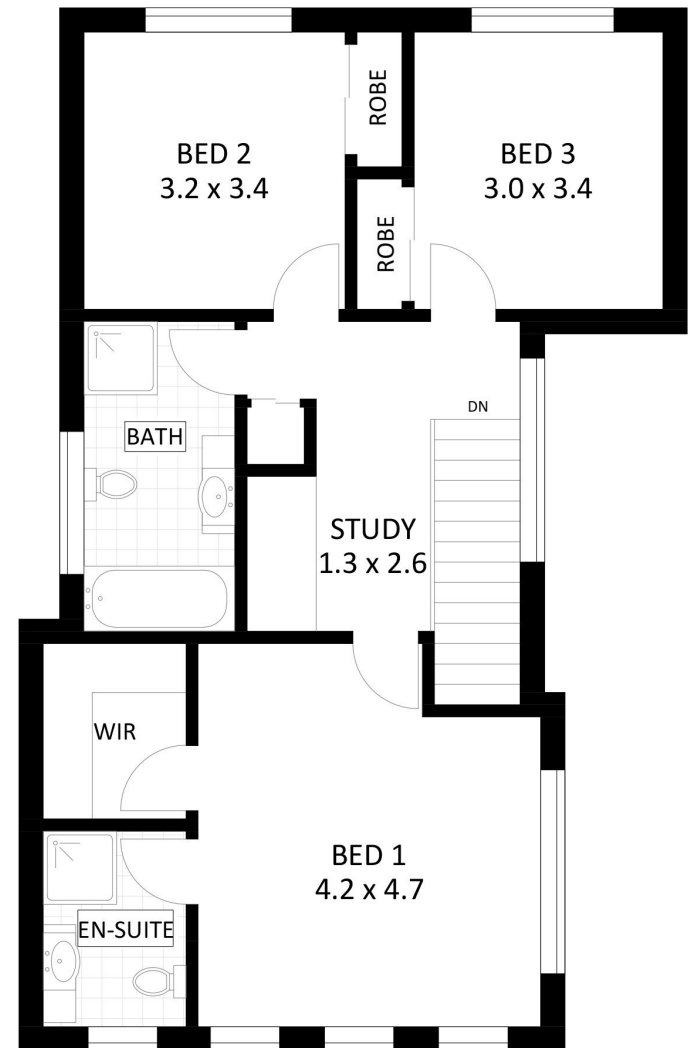
0418 868 978

[dimosons.com.au](http://dimosons.com.au)





**GROUND FLOOR**



**FIRST FLOOR**